

# CAL-X™ (Core Analysis by X-ray): High Throughput Coreflood Screening & Experimentation



## Rock-Solid Workflow

- **Your reservoir type:**  
sandstone, carbonate, naturally fractured, HT / HS, tar sand, heavy oil
- **Step-by-step stages / scales:**  
core plug, near wellbore, interwell, pilot pattern, full field



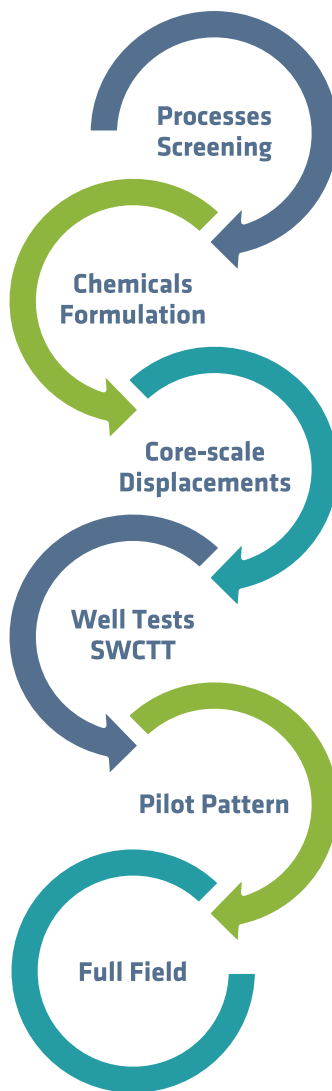
## CAL-X lab

A skillful combination of last generation X-Ray Radiography, miniaturization, automation and data processing

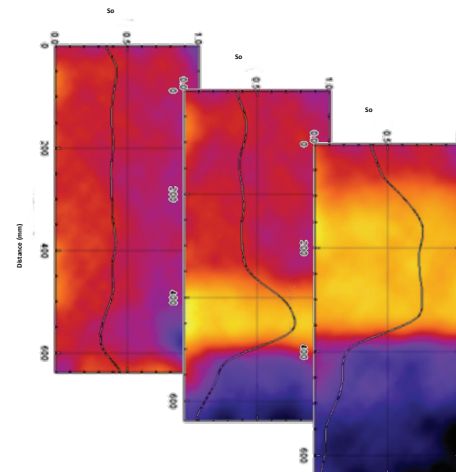


## Addressed Challenges

- Speed up coreflood experiments (From few weeks to few days)
- Faster optimization with detailed analyses
- Flow regime real-time monitoring
- Multi-parameter screening
- Enable Sensitivity Analysis
- Process robustness evaluation

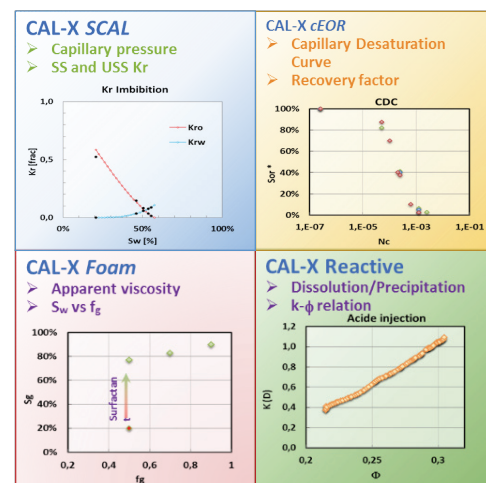


## Real-time monitoring of oil bank displacement



## Multi-experiment platform

- Alkali / surfactant / polymer
- Adsorption inhibitors
- Foams, steam foams
- Wettability change



An Alliance between:



Get in touch: [info@eor-alliance.com](mailto:info@eor-alliance.com) [www.eor-alliance.com](http://www.eor-alliance.com)